

S P R I N G 2 0 1 4

TALLISTON

T I M E S



Welcome to the *spring edition* of our quarterly chronicle

Another season, and we move into the last eighteen months of the twenty-five year project. With the shortest time taken to transform a room at Talliston being two and a half years, and with one complete and three partial locations to complete, it's going to be some race to the finish. So we welcome anyone and everyone to get involved in whatever way seems appropriate. Because we want to make the house and gardens feel as much yours as it is ours...

Save the date

John Clare talk

17th May

An audio-visual presentation by Fiona Fraser-Thomson to celebrate the 150th anniversary.

Volunteer event

28/29th May

Get involved with the project for a weekend of tasks, plus dinner, then evening party.

The War Poets

1st August

Presenting a special poetry night to commemorate The Great War's 100th Anniversary.

In this issue

Walking the Labyrinth...

Charting the timeline of the entire house project, from beginning to end

House & Gardens

Winter progress and almanack from 21st December to 21st March

Arts & Crafts

Harwood House partnership, second Grand Day Out and artist news

Food & Drink

Simple yet delicious menu from our Valentine's At Talliston dinner party

Heraldic Shield Project

Find out more of this wonderful way to be part of our project!

Introducing...

Rose Meirion: The Housekeeper



This is Rose, the new housekeeper at Talliston House & Gardens. Friend her on Facebook to unlock more of the house's hidden secrets...





Walking the Labyrinth

Charting the timeline of the entire Talliston project, from beginning to end

Navigation in Talliston was always a topic that was discussed during the years of renovating each location. A fundamental aspect of the seemingly random historical times and geographical places was always a mystery, and one which was not clearly defined until quite late in the project. Only by experiencing the finished spaces could any sense be made of mapping what was being created. Clarity finally surfaced only with the addition of the glasshouse on the ground floor. This transformed the hall at the base of the staircase into a crossroads – linking the front garden, living room, conservatory and the upstairs in a perfect X. But unlike a standard labyrinth where you walk along the turning pathways, here you walk *within* the walls.

Building a mystery

With this revelation came others, most notably that the elemental building blocks that launched the project were actually just parts of a larger puzzle; a puzzle that included moons and almanacks and household gods. It also gave an insight into how the thirteen rooms were to be laid out, in the form of a chronological path that begins at the arched gate into the grounds, runs along the garden path, through the front door and then winds first around the rooms on the ground floor, then up the stairs,

around the first floor and, finally, up again into the attic. Of course, that's not including the ultimate search for the thirteenth room of the house; the location of the Sioux tipi.

Two and a half decades

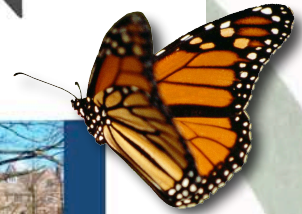
For an otherworldly house where Time never treads, it may seem odd to include a timeline of real-world events here, but this only highlights the duality of the project. This mixes quite deftly what has actually been achieved in terms of the interior and exterior transformation, and also in terms of the final space being created. Yet it is always right to remember that the building had a life before the project, and this chart respects that. After all, it is not long after the project finishes that the house will celebrate its hundredth anniversary.

As you can from the next two pages, there has always been a lot of construction work on the property, and it was already architecturally quite different from the original when the project began. The information has been gleaned from a series of authentic plans and documents released by the planning office about ten years ago. It is as if the muse that inhabits this space has always inspired its occupants to build and create – and as we dig further, there are sure to be more discoveries...

THE GRAND TALLISTON CHRONOLOGY

1919

Newton Hall land sold to Uttlesford District Council after no surviving male members of the family returned from the Great War



1930

Building on Newton Green completed, including No. 51 on 18th May 1930



1930-1982

51 Newton Green owned by Robert Leslie John Chapman and Ivy Margaret Chapman



1969

Architectural plans for removal of coal house, brick partition wall and coal house access door on 16th July 1969



1982-1990

Council house bought from Uttlesford District Council for £11,070 by Mr K S Winstone, on 5th October 1982



1983

Architectural plans for addition and repositioned garage on 11th May 1983



1983

Architectural plans for alterations to rear extension on 9th August 1983



1984

Architectural plans for lobby and bay window addition on 11th October 1984



1984



1984

Kitchen, utility room and bathroom window replacement by Anglian Windows on 9th May 1989



1990

Council house bought from Mr K S Winstone for £75,500 by John Edward Trevillian on 6th October 1990



1995

Five year anniversary of the project and creation of the Friends of Talliston on 6th October 1995



2000

Ten year anniversary of the project and sealing of the box beneath the Fountain Courtyard on 6th October 2000



2001

Architectural plans for crown roof to existing extension and enlargement of front lobby on 3rd December 2001



2002

Architectural plans for side extension on 17th July 2002



2005

Fifteen year anniversary of the project and sealing of the dream catcher in the Watchtower walls on 6th October 2005



2007

Marcus George James Cotton becomes artist in residence on 1st June 2007



2010

Twenty year anniversary and hiding of the secret chest in the Haunted Bedroom on 6th October 2010



2015

Twenty-five year anniversary and completion of the Talliston House & Gardens project on 6th October 2015





Winter project news

21ST SEPTEMBER | OCTOBER | NOVEMBER | 21ST DECEMBER

We look back over what's been happening at the house during the past three months.



The Haunted Bedroom

MASTER BEDROOM | FIRE

With the walls, ceiling, flooring and even the Gothic double bed sourced and finished, our Scottish manor bedchamber is missing only three things to complete Phase IV: building the overmantle above the fireplace, assembling the final elements of the throne toilet and adorning the two dozen crenelations on the ceiling with hand painted shield crests. While we move to new phases on the two last internal locations of the house, these are not priority, but will fill the cracks of time we have in the coming months with a completion date this year.



This watchful hare is part of the larger Arts & Crafts design on the tapestry door curtain

The dogrose ironwork on the Haunted Bedroom bookcase

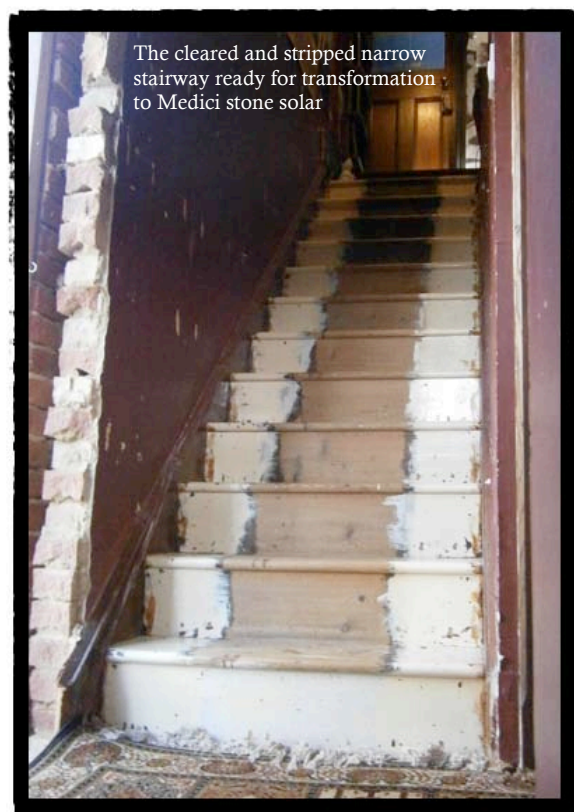


The Hall of Mirrors & The Starhouse

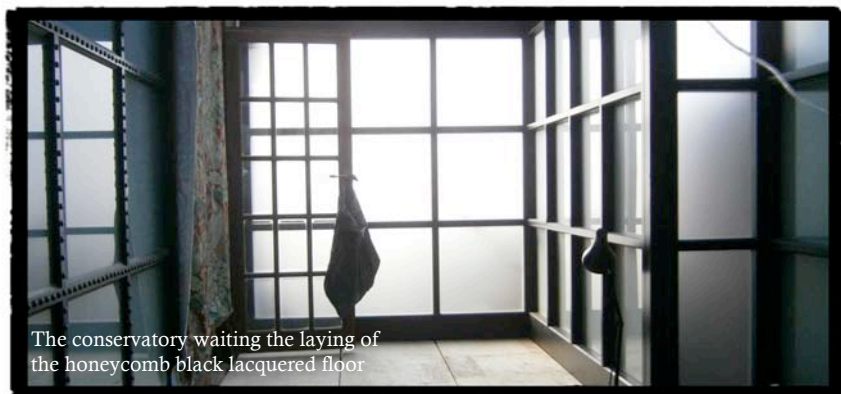
HALL & STAIRS/CONSERVATORY | WATER/AIR

It is always exciting when, after years working on one location, we get to swap times and places to another room. And this winter was a double dose as we cleared both the hallway and conservatory to begin transformation into Italian solar stairway and twenty-third century vivarium ark space, respectively. And it's fair to say that both these rooms offer their own challenges.

For the Hall of Mirrors, it is the ability to show the river of time that runs through the centre of the house, as well as creating lighting that always depicts midday. It is also entirely stone. The future is endlessly tricky as a design motif, and so we are borrowing the elements of Japanese tea house and the ocean-going Golden Age of Travel as our palette for the Starhouse.



The cleared and stripped narrow stairway ready for transformation to Medici stone solar



The conservatory waiting the laying of the honeycomb black lacquered floor

THE GARDENER'S ALMANACK

THE START OF OUR SEASONAL GUIDE TO WHAT'S HAPPENED IN THE LABYRINTH & THE FOUNTAIN COURTYARD GARDENS



In ancient times when man had not quite got round to inventing the wristwatch, the most reliable source of telling the time was the sun, moon, and stars. There seems to be several opinions of who came up with the moon planting calendar first, but farmers noticed that different plants grow better when they are planted during different phases of the moon. Each of these phases imparts an influence on the way vegetation grows on the planet through the rising and falling of the moisture in the ground and in the plants.

Here at the spring equinox it is a good time to sow root vegetables, berries, bulbs, onions, biennials, and perennials. Plus: an excellent time for planting, germination and strong sturdy growth will result.

At Talliston, we are rediscovering the benefits of planting by the lunar cycle and, starting this season, will be covering our discoveries in these pages.

The Labyrinth
Cottage Garden



Sowings due/Planting out

There are no sowings this month. Bedding work is due, particularly putting in bulbs and spring-flowering subjects, whenever the soil and weather are fit enough. Plant out or replant herbaceous border subjects after lifting and dividing. Rose bushes, climbers, shrubs, etc. may be planted too.

Prepare for/Other work due

Border planting, if delayed from last moon. Whether lifting border plants or not, give the border a good forking over and if it has not been manured for two years, do that work too. However, it is better to lift all plants and set them aside while manuring.

Remarks

It is time to overhaul the rose bushes and trees, in the form of staking, cutting off suckers, tying in ramblers and climbers, but not pruning.

The Labyrinth
The Vegetable Patch



Sowings due/Planting out

Some gardeners may feel inclined to try a sowing of winter-hardy broad beans and peas, but the outcome must be considered as uncertain. There is no planting out that may profitably be done now.

Prepare for/Other work due

Press on with winter digging, manuring the soil at the same time. Now is the time to carry out double digging, trenching or ridging the soil, while there is time.



Remarks

Preparing the ground for new selection of crops means digging and manuring the patch at this stage.

The Fountain Courtyard
Summerhouse & Fernery



Sowings due/Planting out

There are no sowings this month. This is not a good time for the work of planting out as the severe weather may follow on immediately and losses may be heavy. Put leaf mould litter around roses for protection, and also hay, straw or litter amongst the branches as a safeguard.

Prepare for/Other work due

Plan summer bedding schemes ready to order seeds. It is a good plan to map the beds and make notes on each of the intended succession. When weather permit make a start at overhauling the herbaceous border.

Remarks

In the border, the plants should be divided every third year. Even if not necessary this year, dig over the border and incorporate manure or well rotted compost (a barrow to every 3 square yards).

WINTER MOONS

21ST DECEMBER
– to – 21ST MARCH

Third Moon | Of Birds | Fire | Dark Half of the Year

Raven Moon

Saturday 21 December (Evening: 17:11 UTC)
Monday 30 December (Morning: 11:14 UTC)

- Saturday 21 December: FEAST DAY: Lord Midwinter. Winter Solstice. First day of winter. Decorate Talliston with hawthorn, oak (mistletoe), heather, holly, chrysanthemum, amaryllis, hyacinth, tulip, and lily.
- Monday 23 December: GOD'S DAY (the nine days that Odin hung from the World Tree, Yggdrasil).

WOLF MOON

S	M	T	W	T	F	S
			1	2	3	4
5	6	7	8	9	10	11
12	13	14	15	16	17	18
19	20	21	22	23	24	25
26	27	28	29			

Fifth Moon | Of Nature: Sea | Water | Dark Half of the Year

Storm Moon

Thursday 30 January (Night: 21:38 UTC)
Friday 28 February (Morning: 08:00 UTC)

- Thursday 30th January: NEW MOON (Fifth Moon – Of Nature/Sea). Room #5: The Boathouse | Bathroom. Fjøsøtvar: The Lightkeeper's House | 1986 | Hamarøy, Norway. GOD'S DAY: Feast of Odin (Woden, All-father, God of the Hanged). Offering of beer and apples.
- Saturday 1 February: FEAST DAY: Midwinter. Imbolc. Candlemas. Festival of the hearth and home (Lighting of candles and hearthfires).
- Friday 14 February: GOD'S DAY: Feast of Poseidon (Lord of the Flowing Waters of Oceanus). Offering of floating gifts on salt water.

EAGLE MOON

S	M	T	W	T	F	S
						1
2	3	4	5	6	7	8
9	10	11	12	13	14	15
16	17	18	19	20		

RAVEN MOON

S	M	T	W	T	F	S
						21
22	23	24	25	26	27	28
29	30					

Fourth Moon | Of Beasts | Earth | Dark Half of the Year

Wolf Moon

Wednesday 1st January (Morning: 11:14 UTC)
Wednesday 29 January (Night: 21:38 UTC)

- Wednesday 1 January: NEW MOON (Fourth Moon – Of Beasts). Room #4: The Voodoo Kitchen | Kitchen extension. Manse L'Estrange | 1954 | Louisiana, USA. GOD'S DAY: Feast of Papa Legba (Spirit of rituals, keeper of the gates and guardian of the crossroads between the sacred and mortal worlds). Offering of kléren (Haitian moonshine and cane liquor) and lost objects.
- Saturday 18 January: GOD'S DAY: Feast of Anubis (The Day of the Feast of Anubis Who Is On His Mountain, Purification of the Gods). Offering of blood and ashes.

STORM MOON

S	M	T	W	T	F	S
				30	31	1
2	3	4	5	6	7	8
9	10	11	12	13	14	15
16	17	18	19	20	21	22
23	24	25	26	27	28	

Sixth Moon | Of Birds | Water | Dark Half of the Year

Eagle Moon

Saturday 1 March (Morning: 08:00 UTC)
Thursday 20 March (Equinox occurs at 16:57 UTC)

- Saturday 1st March: • NEW MOON (Sixth Moon – Of Birds). Room #6: The Fountain Courtyard | Back garden. Tigh Samhraidh (Summerhouse Cottage) | 1933 | County Meath, Ireland. GOD'S DAY: Feast of Cernunnos (Lord of the Animals, Lord of Wild Things, Lord of the Hunt). Offering of ribboned horns and balefires.
- Wednesday 19 March: GOD'S DAY: Feast of Shiva (Lord of all Lords, the Destroyer of Evil). Offering of incense, fruit and flowers.



OUR PARTNERS HARWOOD HOUSE



Harwood House is a family run B&B located in Great Dunmow, conveniently situated for Stansted Airport and more importantly, just a minute's walk away from Talliston. Ian and Helen have been running Harwood House for eight years, recently moving to the adjacent house as their family grew from 2 to 5; an arrangement that works for both their little girls

(who can be a noisy now and then!) and their valued guests.

Helen says: "We have always been committed to providing the most comfortable stay for guests. While we are honoured to have received 4 stars from the AA hotel accreditation scheme and we are rated the number one B&B in Great Dunmow on TripAdvisor, we are always looking for new ways to make Harwood House a place that people remember fondly. We've recently made several updates to our rooms that we hope enhance the experience of our guests.

We have accommodated visitors to Talliston in the past, who have been completely lost for words when trying to describe the house, but having recently been invited to visit ourselves, we can now understand why seeing is truly believing."



www.harwoodhousestansted.com

AND DON'T FORGET TO MENTION TALLISTON WHEN BOOKING

ANNOUNCING OUR NEXT ANNUAL TALLISTON PICNIC &

GRAND DAY OUT

SATURDAY
31st MAY 2014

A free Friends of Talliston day out to the English countryside, visiting our newly planted oaks in Heartwood Forest, a BYO picnic or pub lunch – and for our writers, an afternoon of writing exercises

We will start the day with a ramble to visit Heartwood Forest near Sandridge, St Albans, where we are helping The Woodland Trust create an 850-acre wood from open fields, transforming a site with little value into beautiful broadleaved woodland. The site already boasts 45 acres of precious ancient woodland and by planting an additional 600,000 trees we will be part of creating the largest new native forest in England. Then we will decamp for lunch – with the choices being a grand picnic lunch in the nearby meadows or, if picnicking is not your thing, at The Queen's Head, a traditional English

pub serving freshly cooked food, cask ales and a wide selection of beverages.



Bring a picnic for lunch as we explore the ancient woods in and around Hertfordshire

What To Bring:

- Everyone: Food and drink for the picnic, blankets to sit on, woodland-friendly attire and footwear, etc.
- Writers' Circle: All of the above, plus notebooks, pencils, pens (or laptops).

Register your interest on Facebook, or by emailing: info@talliston.com.

ALL GOOD FRIENDS

Where we ask our friends a little about themselves, their interests and why they visit the house...

LEAH FREDERICK



☀ Tell us a bit about yourself.

I'm a voiceover actor, singer, and freelance artist. I own a multimedia studio and serve as president of a local arts guild in Augusta, Kentucky, USA.

☀ Where did you first hear about us?

I worked with John Trevillian as a narrator for his A-Men trilogy. During one of our conversations, I mentioned being the daughter of an architect who has spent 40 years constructing his dream home. When John shared pictures, I was amazed.

☀ What's the appeal?

First, the incredible amount of dedication and commitment that is involved in creating Talliston demands respect. Unless you have grown up in a never-ending construction zone like I did, it may be difficult to fully appreciate the amount of planning, labour, resources, and sacrifice involved in a project of this magnitude.

☀ Do you have a favourite location?

That's difficult to say as I have only seen Talliston through photographs. However, there are elements that I cannot wait to experience firsthand such as viewing the painted detail decorating the ceiling of the Watchtower, the Fountain Courtyard at night, and the morning light streaming into the Voodoo Kitchen. I'm also keen in seeing the Labyrinth in bloom since I've watched that evolve over the past years.

☀ What do you like most about the project?

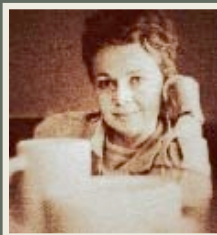
Aesthetically, I deeply appreciate the concept of Talliston; how we can all be inspired to make something extraordinary out of the ordinary. Personally, I love that Talliston connects people across continents by opening its doors to share the magic. And isn't it nice to know that the world is a slightly better and more beautiful place just for having a place like Talliston in it?

ALISON FENNELL

JOINS US AS OUR FEATURED ARTIST FOR OUR SPRING PRIZE DRAW



WIN!



Our featured artists for this season is Alison Fennell, a Welsh painter and watercolour instructor working in Ynysybwl, near Pontypridd in the South Wales Valleys. Born into a family of miners and shopkeepers in Merthyr Tydfil, she always had a dream of being an artist and in her 20s learned the basics of watercolour. She has continued to paint and experiment for the next 20 years.

Animals are her main source of inspiration, and she revels in capturing and expressing their majesty, moods and magic through pure transparent watercolour. Creating authentic and reverent paintings is important to me. I hope that my paintings will bring an appealing and positive animal energy to the spaces they inhabit. As an animal lover I regularly donate prints to many rescues and charities.

Over the last 3 years my work has featured in many UK and USA home decor magazines and been published by several UK card and print companies including Dunelm, Paperlink UK and Beechwood Publications with my work selling nationwide in WH Smiths, John Lewis etc. In early 2014 Museums & Galleries will be launching a collection of 12 of my animal designs as cards and notecard sets.

FIND OUT MORE AT WWW.EASTWITCHING.COM



Veal Roulade

Strips of veal, French beans and tomato tapenade with bread and garnish



Ingredients

Starter from our Valentine's dinner

FOR THE ROULADE

- 🍴 4 pieces veal escalope, approximately 150g each
- 🍴 100g French beans
- 🍴 4-8 slices prosciutto, depending on size
- 🍴 4 tbsp sun-dried tomato tapenade

- 🍴 Salt and black pepper
- 🍴 Olive oil, to drizzle

① Place each piece of veal between two sheets of clingfilm and flatten with a rolling pin until about 2mm thick. Blanch the French beans by dropping them into a pan of boiling water for 2 minutes. Drain and then cool under running cold water.

② Place 1-2 prosciutto slices on a new piece of cling film. Lay one of the flattened escalopes on top and spread 1 tablespoon of the tapenade across the veal. Arrange one quarter of the beans neatly on top. Season well. Roll to form a tight, neat cylinder and wrap in the remaining clingfilm. Once rolled, chill the veal wraps in the refrigerator for 30 minutes to firm them up before cooking.

③ When you're ready to cook the wraps, preheat the oven to 180 degrees Celsius/ fan 160, gas mark 4. Remove the clingfilm and tie each wrap securely with string, looping it around each wrap 3 or 4 times. Drizzle with olive oil and seal in a hot pan until golden brown on the outside.

④ Transfer to a baking sheet and bake for 8-12 minutes, then remove from the oven and leave to rest for 5 minutes. Slice each roll into discs about 2cm thick to serve.

⑤ On top of a selection of small herby salad leaves, place a slice of French toast – crisp bread or slice of bread drizzled with olive oil and baked in the oven until golden and crispy. Mix some extra sun-dried tomato tapenade with olive oil and spread over the toast, then place slices of roulade on top.



Business as unusual

The new way to join the Friends of Talliston

Talliston is a hidden world right in front of your eyes; a world of beauty and mystery. A house where Time never treads... It is an un-place; a land of once upon a time. Imagination is the lock and belief is the key. Do you believe enough to try?

Recently we have changed the way our guests interact with the project. This quarterly newsletter, our website and the Talliston Facebook page are all open forums. But to unlock the house's inner secrets, you must become a Friend, and to do that you must either Like our Facebook page or contact Rose Meirion, the housekeeper.

We look forward to your visit!

www.talliston.com

info@talliston.com | 07760 171100

NEXT ISSUE  SUMMER 2014  21ST JUNE 2014

The Talliston Heraldic Shield Project

Introducing a wonderful way to become a part of our project...

As we put the finishing touches to the Haunted Bedroom, we are excited to announce the opportunity to add your own unique mark on the house.

We are creating 24 hand painted shields to adorn the crenulations that run around the entire room and form part of the Georgian latticed ceiling. In the Scottish manor houses, these would bear crests for the family and affiliated clans – and rather than copying existing designs, we thought we'd open it up to our friends.

Each crest will be designed by you, then hand painted onto the shield, and individually mounted in the lantern ceiling. And once completed, we will photograph and annotate each one in a guide for future guests to enjoy.

To secure your part of the house's history, request full details at: info@talliston.com.



FOR A FULL INFORMATION PACK AND DESIGN
IDEAS, EMAIL: [INFO@TALLISTON.COM](mailto:info@talliston.com)

